



**STUDY IN THE  
HEART OF CHICAGO.**







AT A GLANCE

- 14,294 Undergraduate Students
- 7,376 Graduate Students
- 21,670 Total Students
- 17:1 student-to-faculty ratio
- 97% of classes are taught by professors, not teaching assistants
- Students from 49 states and 141 countries
- 13 Residence halls
- 72% Freshmen live on campus
- 350+ student organizations



RANKINGS

- #127 in National Universities  
U.S. News & World Report (2022)
- #32 Undergraduate Entrepreneurship Program  
The Princeton Review (2021)
- #16 Film School in the Nation  
The Hollywood Reporter (2021)
- #5 Game Design Program in the Nation  
Animation Career Review (2021)
- #23 Top U.S. Animation Schools and Colleges  
Animation Career Review (2021)
- #62 Best Value Schools  
U.S. News & World Report (2022)



ACADEMIC CALENDAR

DePaul operates on a quarter system. Unlike semesters, quarters are 10 weeks in length, occurring in the fall, winter, spring and summer.

Fall Quarter	September – November
Winter Quarter	January – March
Spring Quarter	March – June
Summer Quarter (optional)	June – August

STUDENT OUTCOMES

- 4,500+ Student internships a year
- 90% of graduates are employed or continuing education within six months of graduation
- 84% of employed graduates are in a job related to their degree
- 201,000+ Alumni in DePaul Network
- 3,800 students complete service-learning courses annually





BACHELOR PROGRAMS



DRIEHAUS COLLEGE OF BUSINESS

- Accountancy^ (BSB)
- Actuarial Science\* (BSB)
- Business Administration\* (BSB)
  - International Business
- Economics^ (BSB)
  - Economic Data Analytics\*
- Entrepreneurship^ (BSB)
- Finance^ (BSB)
- Hospitality Leadership^ (BSB)
  - Revenue Management
- Management\*\*^ (BSB)
  - General Management
  - Human Resources^
  - International Managemen
  - Leadership and Change Management
  - Supply Chain Management^
- Management Information Systems (BSB)
- Marketing^ (BSB)
  - Digital Marketing
  - Sales Leadership
- Real Estate^ (BSB)
- Sports Business (BSB)

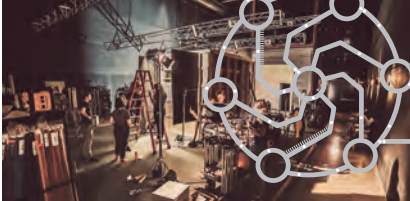


COLLEGE OF COMMUNICATION

- Communication and Media^ (BA)
- Communication and Technology (BA)
- Communication Studies^ (BA)
- Journalism^ (BA)
- Media and Cinema Studies^ (BA)
- Organizational Communication^ (BA)
- Public Relations and Advertising^ (BA)
- Sports Communication (BA)



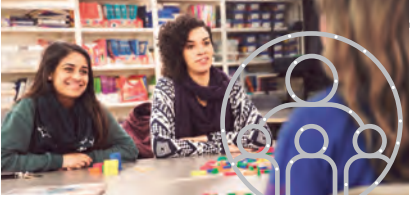
With more than 130 undergraduate programs of study, we have the degree you’re looking for. For more information about the specific programs offered by each college, visit [go.depaul.edu/academics](http://go.depaul.edu/academics).



JARVIS COLLEGE OF COMPUTING & DIGITAL MEDIA

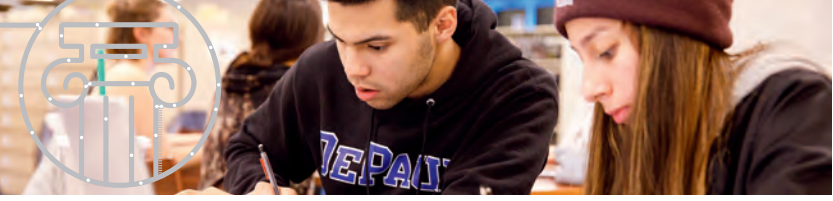
- Animation\*\* (BA, BFA)
  - 3D Animation
  - Cinema
  - Game Art
  - Motion Graphics
  - Storyboarding and Character Design
  - Visual Effects Animation
- Computer Science\*\* (BS)
  - Game Systems
  - Software Development
- Computer Science and Animation
- Computer Science and Geography
- Cyber-Physical Systems Engineering\* (BS)
- Cybersecurity\* (BS)
- Data Science\* (BS)
- Film and Television (BA, BFA)
  - Cinematography
  - Comedy Filmmaking
  - Creative Producing
  - Directing
  - Documentary
  - Editing
  - Production Design
  - Screenwriting
  - Showrunner
  - Sound Design
  - Visual Effects
- Game Design (BS)
- Game Programming\* (BS)
- Graphic Design (BFA)
- Industrial Design (BFA)
- Information Systems\*\* (BS)
- Information Technology\*\* (BS)
  - Media Engineering
  - Web Development
- Math and Computer Science\*\* (BS)
- Network Engineering and Security\*\* (BS)
- User Experience Design\*\* (BS)

130+ UNDERGRADUATE PROGRAMS; 175+ GRADUATE PROGRAMS; 10 COLLEGES & SCHOOLS



COLLEGE OF EDUCATION

- Early Childhood Education (BS)
- Elementary Education (BS)
- Exercise Science (BS)
- Middle Grades Education
- Physical Education (BSPE)
- Secondary Education (BA, BS)
  - Biology
  - Chemistry
  - English
  - Environmental Science
  - History
  - Mathematics
  - Physics
  - Social Science
  - Visual Art
- Special Education (BS)
- World Language Education (BA)
  - Chinese
  - French
  - German
  - Italian
  - Japanese
  - Spanish



COLLEGE OF LIBERAL ARTS & SOCIAL SCIENCES

- African and Black Diaspora Studies (BA)
- American Studies (BA)
- Anthropology^ (BA)
- Arabic Studies^ (BA)
- Art (BA)
- Art, Media and Design (BA)
  - Graphic Art
  - Photography and Media Art
  - Studio Art
- Catholic Studies (BA)
- Chinese Studies^ (BA)
- Criminology (BA)
- Economics^ (BA)
- English^ (BA)
  - Creative Writing
  - Literary Studies
- French^ (BA)
- Geography^ (BA)
- German^ (BA)
- History^ (BA)
- History of Art and Architecture (BA)
- International Studies^ (BA)
- Islamic World Studies (BA)
- Italian^ (BA)
- Japanese Studies^ (BA)

- Latin American and Latino Studies^ (BA)
- Latino/a Culture and Communication
- Peace, Justice and Conflict Studies^ (BA)
- Philosophy (BA)
- Political Science^ (BA)
- Public Policy (BA)
- Religious Studies (BA)
- Sociology^ (BA)
- Spanish^ (BA)
- Women’s and Gender Studies^ (BA)
- Writing & Rhetoric^ (BA)

THE GRACE SCHOOL OF APPLIED DIPLOMACY

- Applied Diplomacy (BA)



COLLEGE OF SCIENCE & HEALTH

- Actuarial Science\* (BS)
- Astrophysics\* (BS)
- Biochemistry\* (BA, BS)
- Biological Sciences\*\* (BS)
- Chemistry\*\* (BA, BS)
- Data Science\* (BA)
- Engineering (BS)
  - Civil Engineering
  - Environmental Engineering
- Environmental Science\*\* (BS)
- Environmental Studies\*\* (BS)
- Health Sciences^ (BS)
- Mathematical Sciences\*\* (BA, BS)
- Mathematics and Computer Science\* (BS)
- Neuroscience\* (BS)
- Nursing (BSN)
- Physics\*\* (BS)
- Psychology^ (BA, BS)



SCHOOL OF MUSIC

- Composition (BM)
- Jazz Studies (BM)
- Music (BA)
- Music Education (BM)
- Music Performance (BM)
- Performing Arts Management (BA, BS)
- Sound Recording Technology (BS)



THE THEATRE SCHOOL

- Acting (BFA)
- Comedy Arts (BFA)
- Costume Design (BFA)
- Costume Technology (BFA)
- Dramaturgy/Criticism (BFA)
- Lighting Design (BFA)
- Playwriting (BFA)
- Projection Design (BFA)
- Scene Design (BFA)
- Sound Design (BFA)
- Stage Management (BFA)
- Theatre Arts (BFA)
- Theatre Management (BFA)
- Theatre Technology (BFA)
- Wig and Makeup Design & Technology (BFA)

PRE-PROFESSIONAL

DePaul offers pre-professional preparation in a number of different areas. You’ll be ready for graduate school, and even more so, you’ll be better prepared to excel in your chosen field, including

- Clinical Psychology
- Dentistry
- Law
- Medicine
- Nursing
- Optometry
- Physician Assistant Studies
- Podiatry
- Public Health
- Speech Language Pathology
- Veterinary Medicine

PRE-HEALTH

If you’re specifically interested in a career in medicine, pharmacy, physical therapy or another health-related field, you’ll benefit from our academic partnership with Rosalind Franklin University of Medicine and Science (RFUMS), one of the largest health care universities in the Midwest. Our Alliance for Health Sciences and our rigorous Pathways Honors program will provide you access to small learning communities, pre-professional advising, hands-on research projects as well as the Early Opportunities Program, an early-admission pathway to six graduate health professions programs at RFUMS, including

- Medicine
- Pathologists’ Assistant
- Pharmacy
- Physical Therapy
- Physician Assistant Studies
- Podiatric Medicine

\*Denotes STEM (Science, Technology, Engineering and Mathematics) Major

^ COMBINED DEGREE PATHS

Is graduate school part of your plan? DePaul offers hundreds of bachelor’s + master’s combined degree paths to help you achieve your academic goals faster.

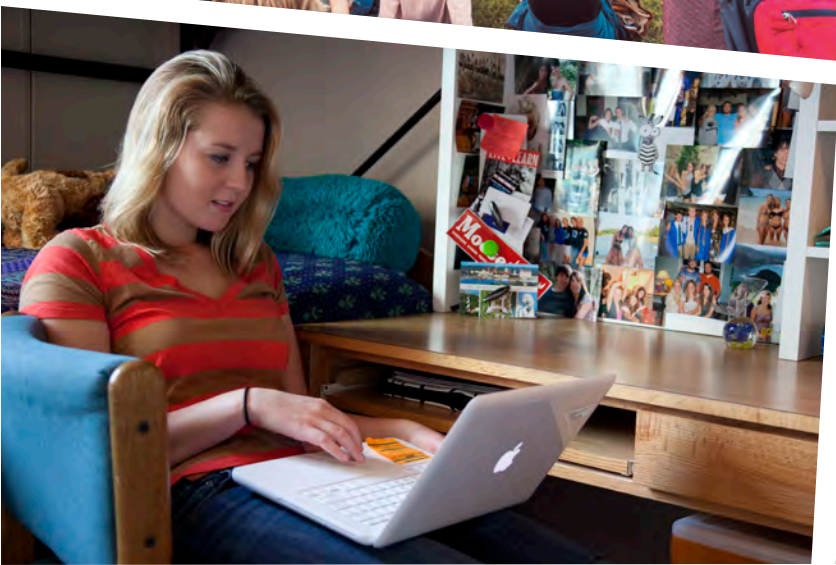
Completing a combined degree track at DePaul also qualifies you for the Double Demon Scholarship. With the scholarship—plus the graduate courses you take in your senior year—you’ll save about 40% on tuition for your master’s degree.



ATHLETICS & RECREATION

DePaul's athletic teams compete in the NCAA Division I BIG EAST conference. The Ray Meyer Fitness and Recreation Center has a four-court gym, a six-lane pool, three racquetball courts, dozens of cardio machines and strength-training equipment.

women's	men's
basketball	basketball
cross country	cross country
soccer	golf
softball	soccer
tennis	tennis
track and field	track and field
volleyball	



TAKE THE NEXT STEP  
APPLYING FOR UNDERGRADUATE ADMISSION

FRESHMAN

APPLICATION DEADLINES\*

	Deadline	Admission Decision by
Early Action Program	Nov. 15	Dec. 15
Regular Notification	Feb. 1	Mar. 15
School of Music	Dec. 1	April 1
The Theatre School	Dec. 1/Feb. 1	April 1
December 1 (Acting, Stage Management) February 1 (all other Theatre majors)		

\*Applications will be considered on a space-available basis after February 1.

ADMISSION CHECKLIST

To apply to DePaul University, please provide us with the following:

- ☐ Complete the Common Application
- ☐ Official Transcripts and/or Secondary School Exams with English translation (if applicable)
- ☐ Proof of English proficiency (if applicable)
- ☐ Some majors may require additional application materials

CONDITIONAL ADMISSION

Students who do not meet our English proficiency requirements for regular admission can be considered for conditional admission. Students who accept conditional admission must study at DePaul's English Language Academy (ELA) until they demonstrate English proficiency.

ELA is a full-time, intensive English program focused on the language skills used in university degree programs. ELA courses are offered at five proficiency levels and taught by expert instructors. Classes are small, usually from 10 to 15 students. For details visit [ela.depaul.edu](http://ela.depaul.edu).

TRANSFER

APPLICATION DEADLINES

Transfer students are admitted on a rolling basis depending on their intended start date.

ADMISSION CHECKLIST

To apply to DePaul University, please provide us with the following:

- ☐ Complete the DePaul University transfer application
- ☐ Official U.S. Accredited College/ University Transcripts (if applicable)
- ☐ Submit Course-by-Course Evaluation for International University Transcripts (if applicable)
- ☐ Proof of English proficiency (if applicable)



ENGLISH PROFICIENCY

English language proficiency, demonstrated by ONE of the following:

- **IBT TOEFL:** minimum score of 80, with no section lower than 17
- **IELTS:** minimum score of 6.5 overall
- **Duolingo English Test:** minimum score of 105
- **PTEA:** minimum score of 53
- **SAT:** minimum evidence-based reading and writing score of 540
- **ACT:** minimum reading score of 18 and English score of 20
- A minimum grade of C in Composition I and Composition II (or the equivalent to DePaul's WRD 103 and WRD 104) from a U.S.-accredited college or university



# Scholarships, Rates and Fees

## SCHOLARSHIPS AND FINANCIAL ASSISTANCE

DePaul awarded \$49 million in scholarships to new freshmen last year. U.S. citizens and permanent residents also may apply for federal student aid.

### Incoming Freshman Scholarships

Freshman academic scholarships are based on academic achievement in secondary school. The awards range from \$8,000-\$25,000 per year.

### Transfer Scholarships

Transfer academic scholarships are based on previous collegiate academic achievement as defined by grade point average. The awards range from \$3,000-\$16,000 per year.

Please note: Theatre, Music, Returning/Readmit, Non-Degree, and School of Continuing and Professional Studies students are not eligible for these awards.

## 2022-2023 TUITION RATES AND FEES

Driehaus College of Business  
College of Communication  
Jarvis College of Computing and  
Digital Media

School of Music  
The Theatre School  
**\$43,506**

College of Education  
College of Liberal Arts and Social Sciences  
College of Science and Health  
**\$42,189**

Estimated living expenses and health insurance for 10 months  
**\$18,500**

Total  
**\$60,689 - \$62,006**



## DEPAUL UNIVERSITY

International Admission  
1 East Jackson Boulevard, Suite 9300  
Chicago, Illinois 60604-2287  
USA

Phone: +1 (312) 362-6542  
Email: [international@depaul.edu](mailto:international@depaul.edu)  
Web: [depaul.edu/international](http://depaul.edu/international)

DePaul University is an equal opportunity employer and educator and complies with the Clery Act, which requires all universities to make this information available to prospective students. DePaul University's Safety & Security Information Report and Fire Safety Report is available upon request and at [go.depaul.edu/CleryASR](http://go.depaul.edu/CleryASR). The report includes statistics about crimes that occurred on campus and on public property immediately adjacent to campus, institutional policies concerning campus security, sexual assault and other matters. It also includes fire statistics, fire safety practices and standards of the institution. For a paper copy of the report, contact DePaul's Crime Prevention Office at (773) 325-7775.