

## Duo: How do I make a device my default?

### Summary:

This guide will focus on how to make a device your default device that is used to authenticate.

### Overview:

1. Login to Duo
2. Change Default Device

### Notes:

- These instructions only apply if you have two or more devices.

## Instructions

Start by navigating to “<https://offices.depaul.edu/information-services/security/tools-downloads/two-factor/Pages/Using-DUO-with-the-VPN.aspx>”

- **Note:** This is the landing page for the Two-factor authentication with the VPN.

Go to “Manage/Add Devices” and click the first link as displayed on the right →

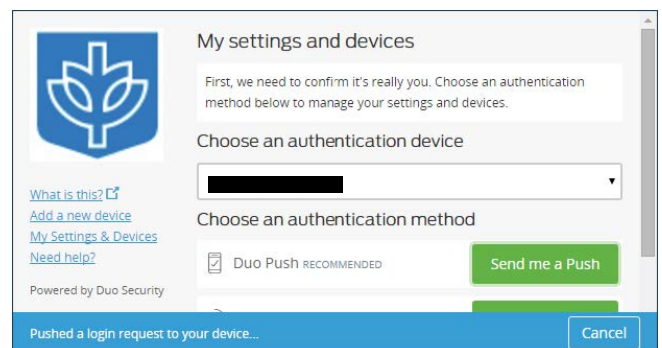
- **Note:** This will take you to a sign in page; sign in with your campus connect user name and password

After logging in, you will be displayed with an authentication screen. Click on “My Settings & Devices.” Now, use the dropdown menu to select an active device and authenticate →

### Manage/Add Devices:

This section is for users who need to manage or add new devices. Please follow the instructions in the [PDF](#). To get started follow the link <https://wapp.is.depaul.edu/duologin/default.aspx>

Please visit the [FAQ page](#) or call the Help Desk for any further assistance.



Once approved, a management screen will be displayed. Here, use the dropdown menu to select the device you wish to make default. Then, click "Save." You should receive confirmation of the change at the bottom →

