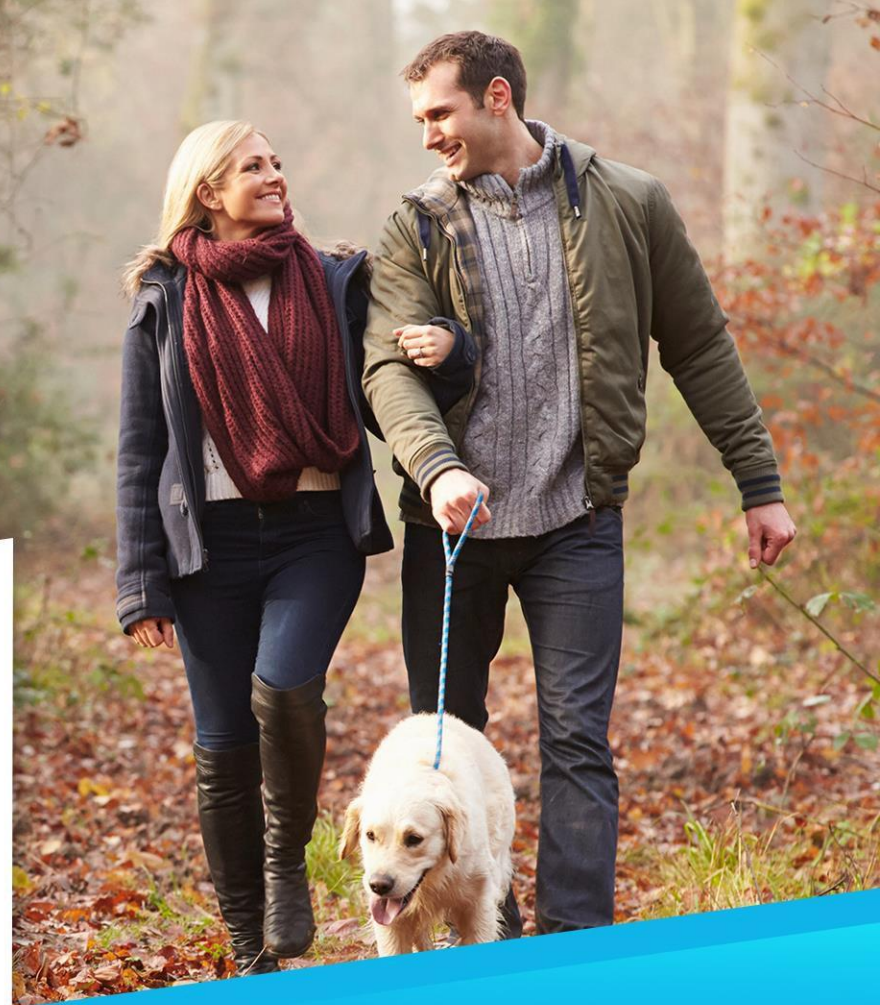




BlueCross BlueShield  
of Illinois

# DePaul University BlueCare Dental<sup>SM</sup>



**INTEGRATED MEMBER EXPERIENCE**  
A focus on customer value, and holistic  
management of member needs.

# DePaul University Dental PPO Plan

# 100%

No Deductible  
In/Out of Network

## PREVENTIVE CARE

Cleanings and Routine Oral Exams

Full-Mouth and Bitewing X-Rays

Sealants

Topical Fluoride Application

DEDUCTIBLE	IN NETWORK / OUT OF NETWORK
Individual	\$50
Family	(\$150)

ANNUAL MAX	IN NETWORK / OUT OF NETWORK
Per Individual	\$1,500



# DePaul University Dental PPO Plan

## IN NETWORK / OUT OF NETWORK

**80%**  
(After deductible)

## BASIC CARE

Amalgam and Composite Fillings

Periodontal Maintenance Cleaning, Scaling and Root Planing

Oral Surgery

Occlusal Guard

Space Maintainers

## IN NETWORK / OUT OF NETWORK

**50%**  
(After deductible)

## • MAJOR CARE

• Dentures, Bridges

• Crown, Inlays and Onlays

• Implants

## IN NETWORK / OUT OF NETWORK

**50%**  
(No deductible)

**\$1,500**

## ORTHODONTICS

Dependent children to age 19

No waiting period

Lifetime Maximum Benefit Per Person



# BlueCare Dental<sup>SM</sup>

## PPO Network

### Advantage to Members:

#### Savings



Discounts of 30 percent to 50 percent are available to BlueCare Dental members. Save money each time you utilize a network dentist.

There is no balance billing when using a network dentist. You are not billed for costs exceeding the allowable amount (except copayments, coinsurances and deductibles).

#### Convenience



You will have access to one of the largest dental networks in the country. To locate the participating dentists in your area, visit Provider Finder®.

You also get the freedom to choose any general dentist or specialist in the network without a referral.

#### Quality



You can take comfort in knowing that professional credentials are verified for every dentist.

Represents possible network locations. Check local listings for exact network options as some locations may not participate. Network locations are subject to change without notice.  
Taxes may apply. Individuals must be at least 18 years old to purchase a membership.



You can lower your out-of-pocket costs when you choose a dentist who participates in the BlueCare Dental PPO network.

PPO Savings Example:	PPO Dentist Crown (D2752)	Non-PPO Dentist Crown (D2752)
Billed Charge	\$1,026.00	\$1,026.00
Allowable Amount	\$675.00	\$1,026.00
Dental Plan pays 50%	\$337.50	\$513.00
Member's Responsibility	\$337.50	\$513.00

The dollar amount shown is for illustrative purposes only. Check your benefit booklet for deductible, coinsurance and dollar maximums that apply.



# Accessing the Dental Provider Finder®

Go to [www.bcbsil.com](http://www.bcbsil.com)

Log in to Blue Access for Members<sup>SM</sup>

Click on

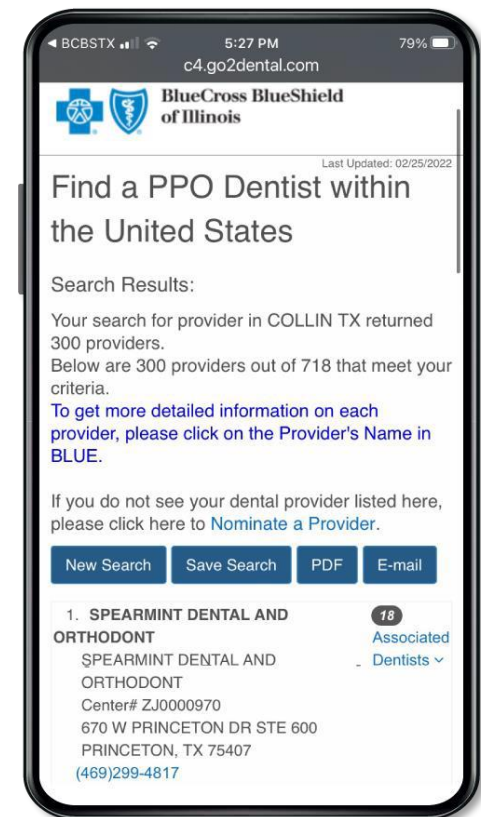
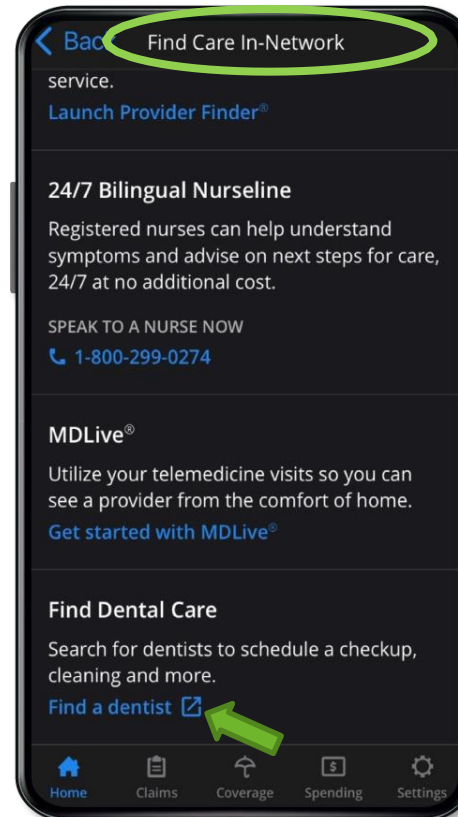


**Dental Care**  
Find in-network dentists

Select the Dental tab  
and click on “Find Dentist”

You may search for an in-network  
dentist by *Dentist Name, Location,  
County, or Center Name.*

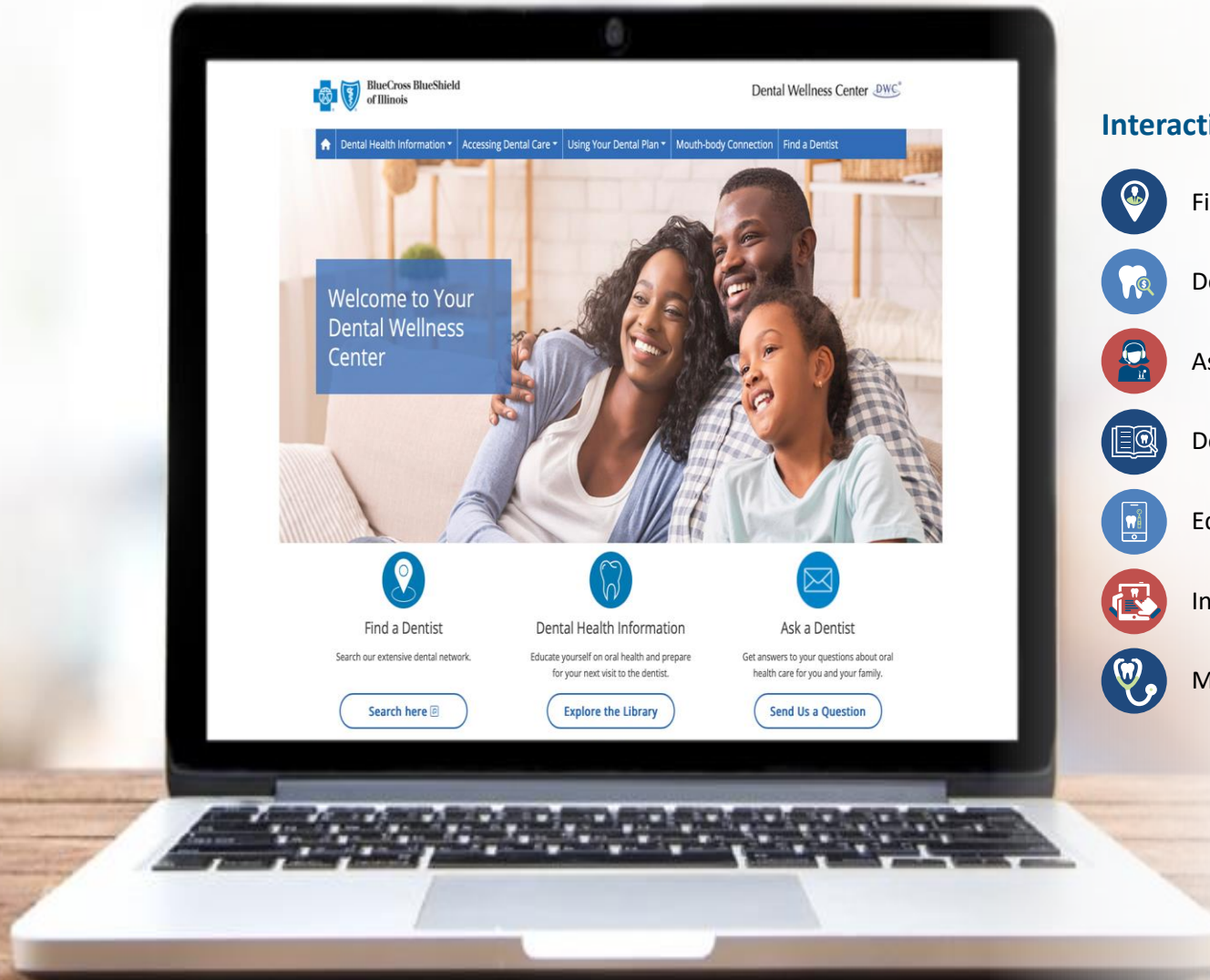
You may also search for an in-network  
dentist when you use the BCBSIL App. on  
your Mobile device





# Dental Wellness Center®

Dental Focused website with tools and resources to help you keep on track with your oral health



## Interactive Web Tools



Find a Dentist



Dental Cost Advisor



Ask a Dentist



Dental Dictionary



Educational Videos



In the News



Mouth & Body Connection

# Virtual Dental Visits 24/7

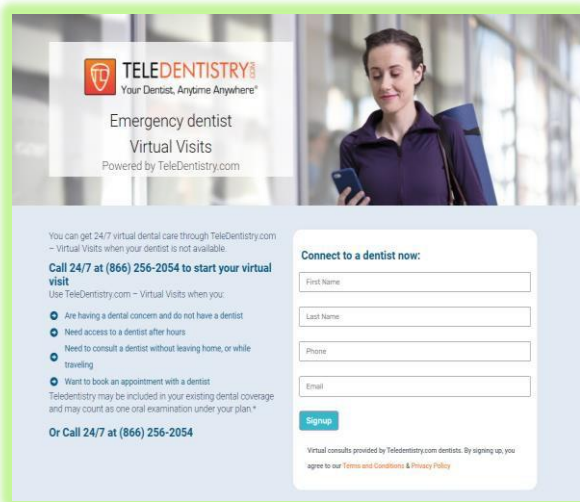
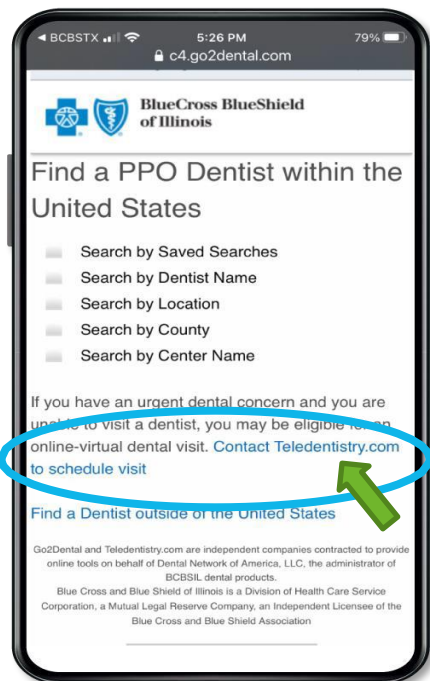
Virtual dental visits powered by [Teledentistry.com](https://www.teledentistry.com) are included as part of our **BlueCare Dental<sup>SM</sup>** PPO network.

## Did you know?

Many people suffering from dental pain end up in an emergency room because they don't know what else to do, when they have a concern and can't get to their regular dentist. Virtual visits give you an option to have your urgent issue evaluated in 10-15 minutes.\*

## Website or Mobile App.

- Click on the link on Provider Finder BlueCare Dental<sup>SM</sup> PPO search page
- Complete the registration form



## Telephone

Call **1-866-256-2054** to schedule a virtual visit

## What can a virtual dentist do for you?

- Provide access to a dentist 24/7 when your regular dentist is not an option, like after hours or when traveling.
- Consult via video conference without leaving your home, workplace, or while traveling.
- Address tooth pain due to things like cavities, gum disease, impacted wisdom teeth
- Prescribe medications\*\* as necessary to offer relief of pain or discomfort.

\*Average times from Teledentistry.com

\*\*No opioids or narcotics





## Questions?

Contact BlueCare Dental Customer Service

**800-367-6401**

Dental Customer Service Customer Advocates are available Monday through Friday, from 8:00 a.m. to 6:00 p.m., Central Standard Time.



BlueCross BlueShield of Illinois