



FACULTY GUIDE TO

# Student Programs and Services

[ 2018-2019 ]



WELCOME TO DEPAUL

## DEAR FACULTY MEMBER,

This Faculty Guide to Student Programs and Services includes information on university resources, supports and co-curricular programs available to our students. The guide is designed to help new and adjunct faculty become knowledgeable resources regarding co-curricular programs and services in order to encourage and support student progress and success. The guide provides easy access to information when a student question or problem arises, and also allows us to better partner with you to support students during their collegiate years.

The Division of Student Affairs develops and implements many of the programs and services found in the Faculty Guide to Student Programs and Services. We provide support services, such as counseling, advising and disability accommodations, along with other programs that foster student success, build community and contribute to the development of the whole student. We do this with a belief in the dignity of every individual, a sense of radical hospitality, and through Vincentian personalism.

Members of my division are available to assist in helping you identify appropriate programs and resources for your students. Please take advantage of our expertise and reach out to us if you have questions or need additional information regarding co-curricular learning and student support services.

Sincerely,

Eugene L. Zdziarski, II, PhD  
Vice President for Student Affairs

# TABLE OF Contents

## ABOUT DEPAUL UNIVERSITY

President | 7

Mission | 7

Colleges and Schools | 8

## CAMPUS LANDMARKS

Brownstone's | 9

Cacciatore Stadium | 9

The Chapel | 9

The Egan Statue | 9

The Holtschneider

Performance Center | 9

Lincoln Park Campus | 9

Loop | 9

LPSC or STU | 9

The Merle Reskin | 9

Multipurpose Room | 9

The Pit | 9

The Quad | 9

The Ray | 9

Schmitt Academic Center | 10

St. Vincent's Circle | 10

Sullivan Athletic Center | 10

The Theatre School | 10

Whole Foods Market | 10

Wintrust Arena | 10

Wish Field | 10

## DEPAUL TRADITIONS

Blue Demon Week | 11

Chicago Quarter/Discover Chicago/

Explore Chicago | 11

DemonTHON | 11

Family Weekend | 11

FEST | 11

Midnight Breakfast | 11

New Student Convocation | 11

New Student Service Day | 11

Premiere | 11

Transition DePaul | 12

Vincentian Service Day | 12

Welcome Week | 12

## QUESTIONS FACULTY MAY ASK

About Student Behavior | 13

About University Counseling

Services (UCS) | 16

About the Center for Students

with Disabilities | 17

## QUESTIONS STUDENTS MAY ASK

About Academics and Studying | 19

About Student Organizations | 20

About Student Life | 21

## ACADEMIC AND SUPPORT SERVICES FOR STUDENTS

Academic Advising | 23

Bluestar | 23

Campus Connect | 23

DePaul Central | 23

D2L | 23

DPR | 23

Libraries | 24

Learning Commons | 24

Office for Academic Advising Support | 25

OrgSync | 25

Science and Math Learning Center | 25

S.T.A.R.S. | 25



Student Government Association | **26**  
Student Support Services TRiO | **26**  
Tutoring | **26**  
Tutoring and Language Learning Center  
(Department of Modern Languages) | **26**  
Tutoring–Math | **26**  
University Center for Writing-based  
Learning | **27**  
Ventra U-Pass | **27**

## **POLICIES AND EXPECTATIONS**

Academic Integrity | **29**  
Alcohol | **29**  
Code of Student Responsibility | **29**  
FERPA/Student Privacy at DePaul | **30**  
Hazing | **30**  
Illegal Use or Possession of  
Controlled Substances | **30**  
Sexual and Relationship Violence | **30**  
Student Handbook | **31**

## **STUDENT SERVICES**

*Provided by Student Affairs*  
Adult, Veteran and Commuter  
Student Affairs | **33**  
Athletic Academic Advising | **33**  
Center for Students with  
Disabilities | **34**  
Dean of Students | **34**  
*DePaul Student Health Services*  
Health Promotion and Wellness | **36**  
*Sexual and Relationship  
Violence Prevention  
Survivor Support Advocates  
Alcohol and Substance Abuse*

## *Prevention*

Multicultural Student Success | **37**  
New Student and Family Engagement | **38**  
Residential Education | **39**  
Student Involvement | **39**  
University Counseling Services | **40**  
Vice President for Student Affairs | **40**

## **STUDENT SERVICES**

*Provided by other university departments  
or divisions*  
Alumni Sharing Knowledge | **41**  
Career Center | **42**  
Catholic Campus Ministry | **42**  
DePaul Central | **43**  
Financial Aid | **43**  
Financial Fitness Program | **43**  
Global Engagement | **43**  
Housing Services | **44**  
Pastoral Care and  
Religious Diversity | **45**  
Ray Meyer Fitness and  
Recreation Center | **45**  
Student Accounts | **45**  
Student Centers | **45**  
Student Records | **45**  
Study Abroad | **45**  
Vincenian Community Service Office | **45**  
Wintrust Bank | **46**  
Women's Center | **47**

## **CAMPUS SECURITY AND TRANSPORTATION**

Public Safety Office | **49**  
Parking Services | **49**  
Public Transportation | **49**



## PRESIDENT

A. Gabriel Esteban, Ph.D.

## MISSION

The mission statement embodies the principal purposes of DePaul University. As such it is the nexus between past, present and future; the criterion against which plans are formulated and major decisions made; the bond which unites faculty, students, staff, alumni, and trustees as an academic community.

As a university, DePaul pursues the preservation, enrichment, and transmission of knowledge and culture across a broad scope of academic disciplines. It treasures its deep roots in the wisdom nourished in Catholic universities from medieval times. The principal distinguishing marks of the university are its Catholic, Vincentian and urban character.

Read DePaul's mission at  
**[go.depaul.edu/mission](http://go.depaul.edu/mission)**

# COLLEGES AND SCHOOLS

## College of Communication

Loop Campus  
14 E. Jackson Blvd.  
Suite 1800  
(312) 362-8600  
**communication.depaul.edu**

## College of Computing and Digital Media

Loop Campus  
243 S. Wabash Ave.  
Mezzanine Level, Room 100  
(312) 362-8381  
**cdm.depaul.edu**

## College of Education

Lincoln Park Campus  
2247 N. Halsted  
Floor 2  
(773) 325-7740  
**education.depaul.edu**

## College of Law

Loop Campus  
25 E. Jackson Blvd.  
Suite 931  
(312) 362-8701  
**law.depaul.edu**

## College of Liberal Arts and Social Sciences

Lincoln Park Campus  
2352 N. Clifton Ave.  
Suite 130  
(773) 325-7300  
**las.depaul.edu**

## College of Science and Health

Lincoln Park Campus  
1110 W. Belden Ave.  
McGowan South Building, Suite 400  
(773) 325-8300  
**csh.depaul.edu**

## Driehaus College of Business

Loop Campus  
1 E. Jackson Blvd.  
DePaul Center, Suite 5100  
(312) 362-6783  
**driehaus.depaul.edu**

## School of Music

Lincoln Park Campus  
804 W. Belden Ave.  
(773) 325-7260  
**music.depaul.edu**

## School for New Learning

Loop Campus  
14 E. Jackson Blvd.  
Suite 1400  
(312) 362-8001  
**snl.depaul.edu**

## The Theatre School

Lincoln Park Campus  
2350 N. Racine Ave.  
(773) 325-7917  
**theatre.depaul.edu**



# CAMPUS Landmarks

## BROWNSTONE'S

The cyber café on the first floor of the Lincoln Park Student Center; the coffee shop has a number of computers with printing capabilities.

## CACCIATORE STADIUM

Home to Blue Demon women's softball.

## THE CHAPEL

Part of the music school, located on the east side of campus at 800 W. Belden Ave. Characterized by its soaring white steeple, it is currently used as a concert hall.

## THE EGAN STATUE

Nine-and-a-half foot bronze likeness of Monsignor John J. Egan, who began and ended his career at DePaul and was known to be a life-long human and civil rights activist. The statue sits on a limestone block just outside of the Lincoln Park Student Center at the corner of Belden and Sheffield avenues.

## THE HOLTSCHNEIDER PERFORMANCE CENTER

Located along the west side of North Halsted Street between Fullerton and Belden avenues, includes the 505-seat Mary Patricia Gannon Concert Hall, the 81-seat Brennan Family Recital Hall, and the 76-seat Mary A. Dempsey and Philip H. Corboy Jazz Hall.

## LINCOLN PARK CAMPUS (LPC)

One of DePaul's campuses, located in the Chicago neighborhood of Lincoln Park.

## LOOP

Part of downtown Chicago and home to the Loop Campus. The area is vaguely bound by a loop created by the 'L' tracks.

## LPSC OR STU

The Lincoln Park Student Center, located at 2250 N. Sheffield Ave., on DePaul's Lincoln Park campus. Houses Brownstone's, a cafeteria, ETC. convenience/grocery store, and the offices of many of the departments in the Division of Student Affairs.

## THE MERLE RESKIN

The Theatre School's downtown theatre located at 60 E. Balbo Dr.—just off Michigan Avenue.

## MULTIPURPOSE ROOM (MPR)

Room 120AB on the first floor of the Student Center that is used for many events.

## THE PIT

Large area in the Schmitt Academic Center between DePaul Central and the Career Center. A great place for students to study, talk with friends or just hangout.

## THE QUAD

Grassy area on the northwest side of the Lincoln Park Campus between University Hall and Richardson Library.

## THE RAY

Ray Meyer Fitness and Recreation Center, operated by the Campus Recreation Department.

## SCHMITT ACADEMIC CENTER (SAC)

A building on the Lincoln Park Campus located at 2320 N. Kenmore Ave.

## ST. VINCENT'S CIRCLE

Landscaped area just off the Quad between the Schmitt Academic Center and the library. Statues depict St. Vincent de Paul interacting with two students.

## SULLIVAN ATHLETIC CENTER

Houses DePaul University Athletics and McGrath-Phillips Arena—home to Blue Demon women's basketball and volleyball.

## THE THEATRE SCHOOL

A 165,000 square-foot, five-story multipurpose facility at 2350 N. Racine Ave. designed by Cesar Pelli of Pelli Clarke Pelli Architects. It houses a 250-seat theatre, a flexible 100-seat black-box theatre as well as administrative and faculty offices, classrooms, rehearsal spaces, design studios, workshops and the school's script library.

## WHOLE FOODS MARKET

National grocery chain that specializes in organic and locally sourced food that has a location on DePaul's Lincoln Park Campus at Fullerton and Sheffield.

## WINTRUST ARENA

Located in the South Loop neighborhood at 200 E. Cermak Rd., Wintrust Arena opened in fall 2017, and is the home of Blue Demon men's and women's basketball. The arena anchors a neighborhood redevelopment project, and hosts year-round events, in addition to DePaul basketball.

## WISH FIELD

Home field for Blue Demon men's and women's soccer.



## ACADEMIC CONVOCATION

Serving as a bookend to graduation, Academic Convocation convenes to officially open the academic year.

## BLUE DEMON WEEK

Blue Demon Week brings together students, faculty, staff and alumni to celebrate what it means to be a DePaul Blue Demon. Student organizations and departments from across the university plan a week of events for the DePaul community, and there's something for everyone.

## CHICAGO QUARTER/ DISCOVER CHICAGO/ EXPLORE CHICAGO

The Chicago Quarter is part of the First-Year Program. All first-year students choose a class called Discover or Explore Chicago as part of their first quarter at DePaul.

## DEMONTHON

DemonTHON is a year-long fundraising effort benefitting the Ann & Robert H. Lurie Children's Hospital in Chicago. It concludes with the "Big Event," the 24-hour dance marathon.

## FAMILY WEEKEND

Family Weekend is a university-wide event intended to invite parents and families to campus during the fall quarter.

## FEST

FEST is a student-run music event. It is hosted and organized by the DePaul Activities Board, and takes place on Lincoln Park campus Quad each May.

## MIDNIGHT BREAKFAST

A free event for students held during Fall Quarter finals. DePaul faculty and staff serve a late-night breakfast to students as a study break and show of support during a stressful time.

## NEW STUDENT SERVICE DAY

This community service day is held the day before fall quarter classes begin. Every student enrolled in a Discover Chicago class is required to participate and those in Explore Chicago are encouraged to do so as well.

## PREMIERE DEPAUL

Orientation program for incoming freshmen students offered by New Student and Family Engagement, a department in the Division of Student Affairs.

## **TRANSITION DEPAUL**

Orientation program for incoming transfer and adult students offered by the Office of New Student and Family Engagement.

## **VINCENTIAN SERVICE DAY**

Vincentian Service Day is a university-wide spring service day for students, faculty and staff coordinated by the Vincentian Community Service Office. More than 1,000 DePaul volunteers engage in service across Chicagoland.

## **WELCOME WEEK**

The university's kick-off for the academic year. This celebration consists of New Student Service Day, the Involvement Fairs, Taste of DePaul and many more activities.

# QUESTIONS Faculty May Ask

## ABOUT STUDENT BEHAVIOR

***What resources are available to faculty if a student is demonstrating inappropriate behavior in the classroom?***

Every student who attends DePaul University is responsible for his or her own actions. DePaul publishes the Code of Student Responsibility as well as Academic Student Handbooks which are quick references outlining student responsibilities. You can read the Academic Student Handbooks online at [go.depaul.edu/handbooks](http://go.depaul.edu/handbooks) or navigate to the Student Affairs webpage then STUDENT LIFE > STUDENT CONDUCT.

If you feel you need to discuss a student's behavior, contact the Dean of Students Office at (773) 325-7290. The Dean of Students Office makes every effort to work at the lowest level regarding student incidences before entering an official process. For more information about the Dean of Students Office programs and services navigate to [go.depaul.edu/dos](http://go.depaul.edu/dos).

***What resources are there for students who have difficulty being academically successful due to a personal, medical or mental health situation?***

The Dean of Students Office has processes and resources, including an administrative withdrawal process and absence notifications, to assist students who are facing significant personal circumstances that affect their ability to be academically successful.

You can also navigate to the Student Affairs webpage, then SUPPORT SERVICES for information on counseling, health and wellness, peer support and other resources.

***What should I do if a student has significant absences from my class or demonstrates changes in behavior that are noticeable and of concern to me?***

It is generally more helpful to comment on a student's observable behavior and avoid diagnostic labeling. Attempt to:

- Establish a supportive relationship with the student.
- Check-in with them in a direct and empathic manner and see what the student is willing to disclose. Students who tell you directly that they are emotionally distressed and have been unable to resolve their concerns on their own may be reaching out for help and ready to accept it. In this case, you should feel comfortable referring the student to the Dean of Students Office.



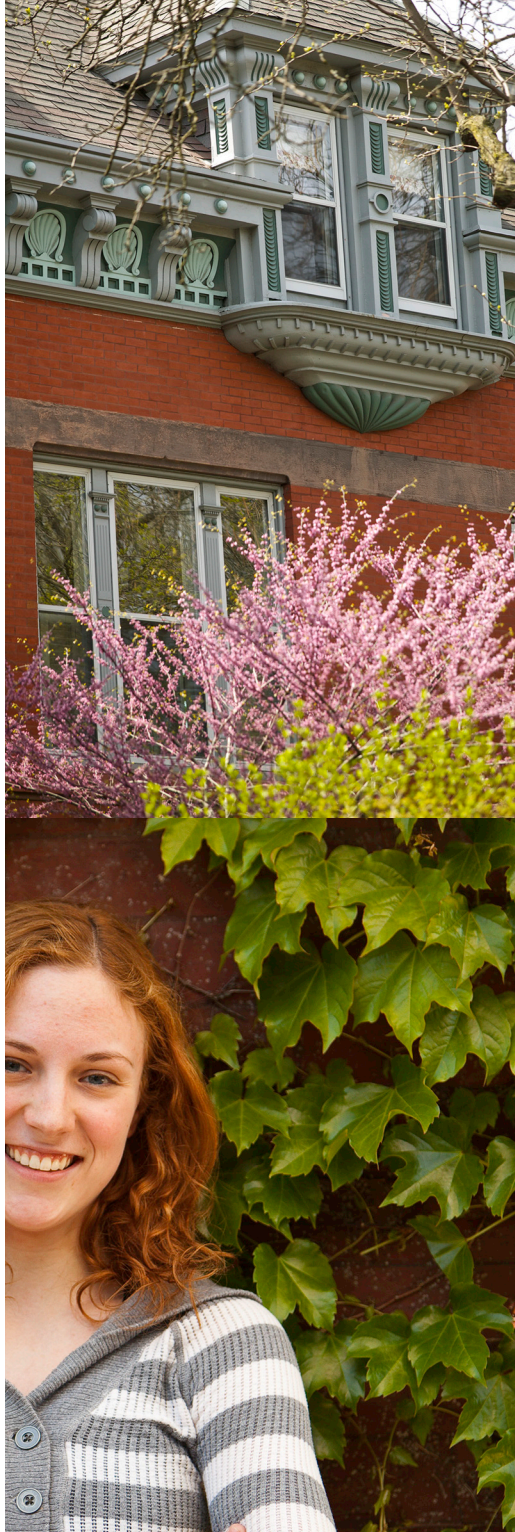
Additionally, the Dean of Students Office can confer with faculty on the most appropriate next steps for the student depending on the situation.

The situation is more difficult when students do not confide in you directly, but when you infer from their behavior that they are emotionally distressed. Depending on the particulars of the situation, you may or may not choose to approach the student. The decision depends on such factors as:

- What specific behaviors of the student are of concern
- How troubled the student seems to be
- Your relationship with the student
- How approachable the student is
- Your personality style and your feelings about intervening

If you think the student is open to discussing their concerns with you, let the student know that you have noticed they seem upset lately, and ask if they would like to talk with you about it. In many cases, suggesting an appointment with the Dean of Students Office is helpful. The Dean of Students Office will meet with the student and discuss the best resources for the particular situation. The Dean of Students Office will make referrals to other campus departments including University Counseling Services (UCS).

UCS offers same day consultation (SDC) appointments to help a student determine the next best step if therapy is appropriate. Students can walk-in to the Loop or Lincoln Park UCS offices or call UCS at (312) 362-6923 (Loop) or (773) 325-7779 (Lincoln Park) to make an appointment.



Keep in mind that some students may reject your efforts, deny all troubles, and/or feel intruded upon. On the other hand, they might feel appreciative of your interest and concern, and your contact with them might be an important step toward their dealing with their problems.

To learn more about University Counseling Services, navigate to **[go.depaul.edu/ucs](http://go.depaul.edu/ucs)**.

### ***How can I respond to students who may confide in me?***

The most appropriate response to students who disclose their personal concerns to you is to:

- Listen.
- Empathize with their feelings and be genuinely supportive.
- Keep your own limits in mind; do not get more involved in the student's life than is comfortable or appropriate for you (in terms of how long the conversations continue, how frequently personal conversations occur, when and where they take place, and how much is expected of you).

For students who seem to need more than you are able or willing to provide, or if professional counseling seems necessary, refer the student to UCS. Tell the student that UCS is there to provide confidential assistance to students managing problems like theirs. For more information and advice on dealing with emotionally troubled students, call UCS and request a phone or in-office consultation.

While it is important to respect the student's privacy, faculty or staff members are not bound by professional standards of confidentiality. There are times when it is appropriate and necessary to discuss concerns and observations about a troubled student with others who might be helpful. For example, Title IX requires that when an individual who is a "responsible employee" learns of sex discrimination, including sexual or relationship violence, the responsible employee is required to promptly report specific information about the situation to DePaul's Title IX coordinator or other appropriate designees.

At DePaul, all DePaul faculty and staff who have not otherwise been designated as confidential reporting resources are responsible employees.

Additionally, the Dean of Students Office can work with faculty on resource and support referrals. Please feel free to contact the Dean of Students Office for more information.

***What is DePaul's protocol if I feel that a student may be thinking about harming themselves or others?***

If there is any question of imminent risk (an emergency situation), or if you become aware of a student who is more than simply distressed and upset but is out of control, violent and/or is suicidal or homicidal, then immediate intervention is needed.

If you believe the student would harm himself or others, call 911 and then Public Safety at (773) 325-7777 for the Lincoln Park Campus or (312) 362-8400 for the Loop Campus. If it is a non-emergency situation, attempt to get the student to the Dean of Students Office or UCS at once. If the student refuses to go, call the Dean of Students Office or UCS to consult with a staff member about what else can be done.

***What should I do if I feel that a student is self-medicating or perhaps overusing their prescribed medication?***

Talk about your concerns with the student and focus on observable behavior (tardiness, slurred speech, cognitive impairment or other behaviors that interfere with new learning ability and may be suggestive of overusing substances or medications). Remind the student of the resources that are available at the counseling center.

Assessments about use and abuse of medications are very difficult to make, so feel free to call UCS at the Lincoln Park Campus at (773) 325-7779 or the Loop

Campus at (312) 362-6923 to consult with a clinical staff member. Additionally, please feel free to utilize the alcohol and substance abuse prevention specialist at (773) 325-4550.

**ABOUT UNIVERSITY COUNSELING SERVICES (UCS)**

***What counseling services are available to students and faculty?***

Part-time and full-time students are eligible for counseling services at DePaul. Group, individual and couples counseling is available based on a thorough psychosocial assessment of the student's needs. UCS staff members do not see faculty, staff or alumni, but may be consulted if assistance is needed in seeking a referral. Faculty also may make use of Perspectives, our Employee Assistance Program at DePaul.

UCS staff members consult with faculty regarding disruptive student behaviors and can create some strategies for intervention in the classroom. Faculty should feel free to call on UCS staff at any time to discuss a difficult situation regarding a student.

Currently, UCS offers referrals in the community if a student is seeking long-term, open-ended psychotherapy, needs the resources of a multidisciplinary team such as eating disorders or substance abuse treatment, or needs to be seen multiple times per week. UCS staff members are knowledgeable about resources in the community, many of which offer sliding scale fees.



### ***What about the student who refuses to go to counseling?***

Except in certain life-threatening situations, the choice of whether or not to seek professional help is up to the individual. If a troubled student refuses to seek counseling in the absence of risk behaviors, you need to accept the student's decision. If you are quite concerned about such a student, consult with UCS. In an emergency, contact UCS at (773) 325-7779 to immediately speak to a staff member. A staff psychologist can suggest alternative ways of approaching the student to help more effectively intervene on the student's behalf. You also may consider consulting the Dean of Students Office.

## **ABOUT THE CENTER FOR STUDENTS WITH DISABILITIES (CSD)**

### ***How do I access student information from the Center for Students with Disabilities?***

Faculty receive an automatic email alert at the beginning of the term from the CSD system indicating CSD students are in their course(s). Faculty should check their Campus Connect account for a listing of self-disclosed CSD students in their courses and students, classroom and test-taking accommodations.

Faculty instructions for CSD access will provide faculty with procedures on how to access student information and test requests as well as information they need to provide to CSD.

### **Important Note:**

When you navigate to Instructor Resources, there is no sub-category for 'Students with Disabilities' listed in the sidebar on the left. You must actually click on the Instructor Resources link

to progress to the page that includes 'Students with Disabilities' and then click on the link 'Students with Disabilities'.

Report any database problems to **[csd@depaul.edu](mailto:csd@depaul.edu)** immediately, enabling us to contact the technology department to fix the problem as soon as possible.

### ***How do I facilitate student accommodations, and what kinds of student accommodations are available?***

Students are issued a range of accommodations based on their documented disabilities and CSD staff observations in their direct work with students. Students access their accommodations at their discretion during the term and may select just some of them for a faculty member's particular class.

In fulfilling accommodation needs, CSD staff work collaboratively with faculty, staff and students. Faculty and staff should readily consult with CSD staff to discuss strategies for facilitating accommodations as well as effective instructional strategies with students.

### ***How can I encourage students to discuss their disabilities with me?***

Many students with disabilities enter higher education and do not realize there is support for them; others are aware but yearn to achieve without it. And current CSD students need encouragement to discuss their disabilities with their professors, who are eager to assist.

In efforts to reach these students, CSD seeks the assistance of all faculty. We request that they include a statement in their course syllabi with information about the Center for Students with Disabilities (CSD). You can find the statement at **[go.depaul.edu/facultycsd](http://go.depaul.edu/facultycsd)**.



# QUESTIONS Students May Ask

## ABOUT ACADEMICS AND STUDYING

Students can learn more about academic support by navigating to the Student Affairs webpage, then SUPPORT SERVICES or to the Student Success page at [go.depaul.edu/success](http://go.depaul.edu/success). These services exist to help students make adequate academic progress, or, when they can't do that because of circumstances out of their control, point them to systems and processes that help them overcome life hurdles.

In this section, you will find information on the absence notification process, academic advising related to selecting courses and changing majors, career coaching, tutoring and more.

### ***Where can I study on campus if I don't want to study in my room?***

Each of the DePaul libraries has areas designated for studying, research and homework. Students also study in the Student Center, as well as the lobbies outside many college offices and academic buildings. Additionally, DePaul residence halls have spaces for studying. In the spring and fall, students can be found studying outdoors on the Quad or other open areas on campus.

### ***Will my parents get my grades?***

Due to privacy laws (see DePaul Central's Records page at [go.depaul.edu/depaulcentral](http://go.depaul.edu/depaulcentral)), DePaul will only list grades on Campus Connect for students to access. Grades are posted on Campus Connect at the end of each term. It is ultimately up to students to share grades with a parent or guardian.

### ***How do I change my schedule?***

Students should speak with their academic advisor before changing their schedule to ensure that the courses they are interested in fit within the major they have chosen.

Students use the Drop/Add or Swap Class functions in Campus Connect to change their schedule. There are various deadlines for dropping courses and many are in the first or second week of classes; students should be aware of these deadlines before attempting to drop a course.

### ***How do I change my major?***

Students can formally change or declare a major or minor in Campus Connect by using the Change College, Major, Minor option. After logging into Campus Connect, students should click on For Students > Records and Registration > Change College, Major, Minor to declare or change a major or minor. To declare or change a concentration within a major or minor, students would use the same procedure described above.

## ABOUT STUDENT ORGANIZATIONS

Students can find information on student organizations, events on campus, student employment and leadership opportunities at DePaul by navigating to the Student Affairs web page, then STUDENT LIFE or visit DePaul's OrgSync page at [orgsync.com/login/depaul-university](https://orgsync.com/login/depaul-university).

Being involved with the campus community will enhance the DePaul experience, and with more than 350 student organizations and many other ways to get involved, it's just a matter of choosing how to enhance the experience.

### ***What kinds of clubs and student organizations does DePaul offer?***

DePaul has over 350 clubs and organizations, such as a literary magazine, radio station, newspaper, choral groups, drama club, jazz band, student government, academic organizations, ethnic clubs, honorary academic groups, special interest clubs, debate team and community service organizations.

Students are encouraged to attend one of two involvement fairs offered in the fall and winter quarters to learn more about student clubs and organizations. Information about these fairs is posted around campus, as well as on Campus Connect and OrgSync.

### ***What kinds of fraternities and sororities are established at DePaul?***

There are 30 fraternities and sororities at DePaul University. Students can contact the Office of Student Involvement for more information.

### ***I've heard a lot about FEST. How can I get involved?***

FEST is a spring outdoor concert and festival that is planned and implemented by the DePaul Activities Board (DAB). DAB is the largest programming body on campus and works to provide a variety of events for the DePaul community.

Students can apply to be a program assistant on one or more of DAB's seven committees, or they can apply to be a coordinator of one of the committees.

For information on other exciting events that DePaul hosts throughout the year, such as service days, Blue Demon Week and Family Weekend, navigate to the Student Affairs webpage then to EVENTS.

### ***Does DePaul have a homecoming?***

No. Instead of a homecoming, DePaul celebrates Blue Demon Week during the winter quarter. The DePaul Activities Board (DAB), the Student Government Association, and various university departments (including Alumni Relations, the Ray Meyer Fitness and Recreation Center, Student Affairs and Athletics) plan Blue Demon Week. The week typically features a number of spirit and affinity building events on campus, and culminates with men's and women's senior day basketball games and a Blue Demon Dance. For more information, visit DAB's website at [orgsanddepartments.orgsync.com/org/dab](https://orgsanddepartments.orgsync.com/org/dab).

## ABOUT STUDENT LIFE

The college experience is about more than just classes, exams, homework and studying. The life a student lives outside the classroom can contribute to learning, college success and growth almost as much as some of those more traditional activities.

There are plenty of ways a student can be engaged on campus and enhance their DePaul experience. Students can navigate to the Student Affairs webpage, then to STUDENT LIFE to find information on student organizations, community engagement opportunities, leadership opportunities and programming designed to support students and their families throughout the DePaul experience.

### ***How can I meet people at DePaul?***

Students can meet new people just about everywhere at DePaul: in the residence halls, in class and outside of class, and at programs and events on campus.

Many of DePaul's offices are dedicated to student involvement and deliver many on-campus opportunities that help students connect to and network with others. Students can visit OrgSync to learn about student clubs and organizations on campus, as well as see upcoming campus events. They can also visit the Student Affairs website to learn about a variety of ways to get involved and meet people.

### ***What do DePaul students do on the weekends?***

A wide variety of activities take place on campus over the weekend. Many of these events will be advertised in

OrgSync, the online student organization portal, the Student Affairs web page, or in the Student Center, residence halls or on various message boards around campus. Chicago also hosts many interesting attractions, ranging from the Lincoln Park Zoo to the Museum of Science and Industry, the Field Museum or the Shedd Aquarium.

### ***What religious activities are available at DePaul?***

DePaul is Catholic by tradition, but is inclusive and accepting of all religions. Catholic Campus Ministry, the Vincentian Community Service Office and the Office of Pastoral Care and Religious Diversity seek to aid students in their spiritual development whether they are Catholic, Protestant Christian, Jewish, Muslim, Buddhist or still seeking faith. DePaul also offers prayer rooms as well as daily and weekend Mass services for students.

Spirituality, service and justice are at the heart of learning at DePaul, and a number of departments do much to support students' efforts to make a difference in their world. Students can find more information on services by navigating to the Student Affairs webpage, then to SPIRITUALITY.

### ***How can I get involved in intramural or club sports?***

Students looking to get involved and compete in intramural and club sports can check the Ray Meyer Fitness and Recreation Center website through Campus Recreation or head to the Ray front desk for information on signing up. Students looking for specific activities should check the availability by quarter at [go.depaul.edu/campusrec](http://go.depaul.edu/campusrec), then navigate to Sports and Outdoors > Club Sports or > Intramural Sports.

### ***How can I get DePaul athletic event tickets and how much do they cost?***

Full-time students are admitted to all DePaul athletic events free of charge. Students can reserve their ticket at [depaulbluedemons.com](http://depaulbluedemons.com) and claim it at the door with a valid student ID. Guest tickets can also be purchased for a fee.

### ***Where can I get discounted tickets to movies and events in Chicago?***

To help students take advantage of the many things to see and do around Chicago, Student Affairs acquires discounted tickets for attractions, events and performances and then allows students to purchase them conveniently on campus. Students can find more information on student discounts by navigating to the Student Affairs webpage, then to STUDENT LIFE.

### ***Where do I go if I am feeling down, stressed or have personal concerns?***

University Counseling Services (UCS) is available for students who feel the need to speak with someone privately about important issues they are facing. Counselors will help a student set goals for working through an issue or make referrals for a student to receive the help they need.

For information on the wide range of support services offered, students can navigate to the Student Affairs webpage, then SUPPORT SERVICES.

### ***How do I use public transportation and what is a U-Pass?***

The CTA (Chicago Transit Authority) is the main form of public transportation in Chicago. With the Fullerton 'L' stop in the center of the Lincoln Park Campus, the Jackson subway stop near the Loop Campus and bus stops throughout the city, there are any number of routes available for students, faculty and staff to use to travel nearly anywhere in Chicago. Route maps and the CTA website ([transitchicago.com](http://transitchicago.com)) can be helpful when navigating public transportation.

The CTA Ventra U-Pass is a transit pass that eligible students can use for unlimited rides anywhere on the CTA system. Eligible students include full-time undergraduate students and some full-time graduate students. Eligible students will be charged a nominal fee which will appear on each quarter's tuition statement.

## ACADEMIC ADVISING

Academic advisors provide assistance and guidance in all aspects of students' chosen curricula; they also offer major field and career-related advice. Academic advisors can help students plan workable educational goals; understand degree options, requirements and the financial implications of decisions; assess academic strengths and challenges and clarify realistic career objectives upon graduation.

Students meet their academic advisors during orientation, and should meet with them each quarter prior to registration. For additional information, students can visit [go.depaul.edu/success](http://go.depaul.edu/success), or they should contact their college advising office.

## BLUESTAR

BlueStar is an online system that supports students' academic success by helping to connect students to advisors, instructors and other DePaul resources. Faculty members use BlueStar to allow students to schedule appointments online, record notes from meetings, send messages, refer students to other offices, assign tasks for them to do, offer kudos, and, most importantly, to raise flags that indicate some kind of concern about a particular student's performance. For additional information, visit [go.depaul.edu/BlueStar](http://go.depaul.edu/BlueStar) or email [BlueStar@depaul.edu](mailto:BlueStar@depaul.edu). BlueStar can be accessed by logging in to Campus Connect; then Self Service>BlueStar.

## CAMPUS CONNECT

The university online portal used to conduct student, faculty and staff business, such as employee services, grade reporting and tuition payments.

## DEPAUL CENTRAL

One-stop services to help students manage the business side of being a student at DePaul: registration, financial aid and payment.

## D2L

Desire2Learn is a web-based learning tool used for course instruction. Professors can post course syllabi and readings. Students can host discussions, post homework and submit writing assignments.

## DPR

The Degree Progress Report (DPR) is an academic planning tool accessed through Campus Connect to help students determine the courses and requirements needed to complete their degree at DePaul. The DPR also offers course planning and what-if simulations to explore additional major or minor interests at DePaul.

## **LIBRARIES**

**Lincoln Park Campus**  
**John T. Richardson Library**  
**2350 N. Kenmore Ave.**  
**(773) 325-7862**

**Loop Campus**  
**Loop Campus Library**  
**1 E. Jackson Blvd.**  
**DePaul Center, Floor 10**  
**(312) 362-8433**

**Rinn Law Library**  
**25 E. Jackson Blvd.**  
**Lewis Building, Floor 5**  
**(312) 362-8121**

**libraries@depaul.edu**  
**library.depaul.edu**

The DePaul University libraries provide resources and services to students, faculty and staff at three campus locations as well as from home or office via the libraries' website. Library facilities include the Richardson Library at the Lincoln Park Campus and the DePaul Center and Law libraries at the Loop Campus.

Access to materials in all the DePaul libraries is provided through the libraries' online catalog. Through the catalog, students can also locate and check out books from 70 other colleges and universities in Illinois. Reference librarians are available at the Loop and Lincoln Park libraries to assist students with research assignments. Or students can get research help via the AskALibrarian chat widget or the AskALibrarian email form.

## **LEARNING COMMONS**

The Learning Commons, located on the first floor of the John T. Richardson Library, is a collaborative learning studio, which provides a variety of peer tutoring services and résumé assistance.

Tutoring and consulting services are offered daily, according to the schedule. No appointment necessary. Visit the Learning Commons website for more information and the schedule.



## OFFICE FOR ACADEMIC ADVISING SUPPORT

**Lincoln Park Campus**  
**2320 N. Kenmore Ave.**  
**Schmitt Academic Center, Room 192**  
**(773) 325-7431**

**Loop Campus**  
**1 E. Jackson Blvd.**  
**DePaul Center, Suite 9500**  
**(312) 362-8437**

**[advisingsupport@depaul.edu](mailto:advisingsupport@depaul.edu)**  
**[oaas.depaul.edu](http://oaas.depaul.edu)**

The Office for Academic Advising Support, part of the College of Liberal Arts and Social Sciences, provides comprehensive academic advising and major exploration services to undeclared or exploratory undergraduate students at DePaul.

Students can schedule an academic advising appointment with an advisor by stopping by either the Lincoln Park or Loop office locations or calling the main OAAS number at (773) 325-7431.

## ORGSYNC

OrgSync is a web-hosted platform that facilitates engagement by connecting students to organizations, departments and programs.

## SCIENCE AND MATH LEARNING CENTER

**Lincoln Park Campus**  
**1036 W. Belden Ave.**  
**O'Connell Hall, Suite 300**  
**(773) 325-8130**

**[csh.depaul.edu/student-resources/  
Pages/Science-and-Math-Learning-  
Center.aspx](http://csh.depaul.edu/student-resources/Pages/Science-and-Math-Learning-Center.aspx)**

For currently enrolled DePaul students, the Science and Math Learning Center (SMLC) provides free tutoring and academic support in the following areas: chemistry, mathematical sciences, physics, psychology (for statistics), quantitative reasoning (for LSP 120/121), and writing in the sciences.

The schedule of tutors is available on the center's website. The center operates on a walk-in basis only, per the posted schedule. Students must bring their valid student i.d. with them.

## S.T.A.R.S.

Students Together are Reaching Success (S.T.A.R.S.) is an academic success and retention program for first-year students administered by the Office of Multicultural Student Success. A peer mentor in the S.T.A.R.S. program serves as an academic mentor, an advocate and a resource for 10-12 students assigned to them as mentees. The program specifically targets DePaul students who are the first in their families to go to college, are from low-income families or are students of color.

## STUDENT GOVERNMENT ASSOCIATION (SGA)

The Student Government Association consists of elected representatives that act as the student body “voice” to the president of the university and the Board of Trustees.

## STUDENT SUPPORT SERVICES TRIO

**Lincoln Park Campus**

**2320 N. Kenmore Ave.**

**Levan 110**

**(773) 325-4600**

**[go.depaul.edu/TRIO-SSS](http://go.depaul.edu/TRIO-SSS)**

The Student Support Services (SSS) program provides advising, academic assistance, mentoring and career-related services to qualified undergraduate students at DePaul. The program, which is funded by a grant from the U.S. Department of Education, is part of a national network of TRiO programs designed to enhance the college experience and achievement of students from first-generation and low-income families. Students who are citizens or permanent residents of the U.S., are in a baccalaureate degree program and who demonstrate a need for academic or other support may benefit from participation in this program.

## TUTORING

Most of the university’s individual academic departments offer tutors to assist students with specific course problems. Tutoring services are free to DePaul students and available throughout the academic year. Tutoring schedules are generally available through departmental offices.

## TUTORING AND LANGUAGE LEARNING CENTER (DEPARTMENT OF MODERN LANGUAGES)

Free tutoring services are offered through the Department of Modern Languages. Students currently enrolled in a DePaul language course are eligible to arrange for up to two appointments a week (one hour per session). For appointments, call (773) 325-1888 or students can visit the Language Learning Center in Schmitt Academic Center 305 in Lincoln Park.

## TUTORING—MATH

Math tutoring is available through the Science and Math Learning Center (see page 25).

## UNIVERSITY CENTER FOR WRITING-BASED LEARNING

**Lincoln Park**

**2320 N. Kenmore Ave.**

**Schmitt Academic Center 212**

**(773) 325-4272**

**Loop Campus**

**25 E. Jackson Blvd.**

**Lewis Center, Suite 1600**

**(312) 362-6726**

**[depaul.edu/writing](http://depaul.edu/writing)**

The University Center for Writing-based Learning (UCWbL) works with all members of the DePaul University community to support writers and to promote the use of writing in teaching and learning through five major initiatives: The Writing Center, The Writing Fellows Program, workshops, The Collaborative for Multilingual Writing and Research (CMWR) and faculty development.

## VENTRA U-PASS

The Ventra card is a contactless way to pay for transit on CTA trains and buses. Riders can purchase passes and add transit value at CTA rail stations, participating retail locations, online or by phone.

All full-time, eligible students at DePaul get a Ventra U-Pass, which provides unlimited rides on any CTA or Pace system bus or train at a discounted price during the academic quarters.



# POLICIES AND Expectations

*By voluntarily joining the university community each student agrees to abide by the standards that have been instituted by DePaul University. Students are responsible for being familiar with all of the policies included in the Code of Student Responsibility.*

## ACADEMIC INTEGRITY

DePaul University is a learning community that promotes the intellectual development of each individual within the community. The university seeks to maintain and enhance the educational environment of the community in a variety of ways, including through the development and promotion of standards for academic honesty. The university believes that all members of the community are responsible for adherence to these standards for academic honesty, and that all violations of academic integrity are detrimental to the intellectual development of individuals within the community and to the community at large.

## ALCOHOL

The State of Illinois prohibits the sale, use, distribution, manufacture or possession of all forms of alcoholic beverages by persons under 21 years of age. Students under 21 years of age may not sell, use, distribute, manufacture or possess all forms of alcoholic beverages.

Providing or distributing alcohol to individuals under the age of 21 is prohibited.

Students, even those 21 years of age or older, may not possess or consume alcohol in common or non-reserved areas on university premises.

Alcohol consumption that results in behavior that infringes on the rights of others in the community is prohibited. Alcohol consumption that creates a risk of harm to self, including requiring a transport to the hospital for intoxication, is prohibited. Please review the full policy at [go.depaul.edu/alcoholpolicy](http://go.depaul.edu/alcoholpolicy).

For specific policies regarding alcoholic beverages in the residence halls, please see the Guide to Student Housing.

For specific policies regarding events sponsored by student organizations at which alcohol is served, please see the Student Organization Handbook.

## CODE OF STUDENT RESPONSIBILITY

The Dean of Students Office is committed to partnership in the educational mission of DePaul University. This mission is enhanced by a Code of Student Responsibility, which includes policies that outline expectations and standards of behavior for the student community. Any community of more than 22,000 people needs rules. As a DePaul University student, the policies in the DePaul Code of Student Responsibility are not a list of things you can do wrong; it is a code designed to protect your rights and those of all DePaul students. Any student who feels that another student

in the community has violated their rights is encouraged to use this Code and the Dean of Students Office as a resource.

## FERPA: STUDENT PRIVACY AT DEPAUL

DePaul is committed to maintaining student records privacy, in compliance with the Family Educational Rights and Privacy Act of 1974 (FERPA).

Students are responsible for setting and maintaining their FERPA directory release preferences in Campus Connect. Students have access to all of their records maintained by the university except those considered to be confidential under the act. Students have access to view and print information from their academic record through Campus Connect. The university does not release this information to anyone other than the student.

Students are encouraged to maintain open communication with their parents and/or family members regarding academic progress and other important issues. For additional information, please visit the Student Records website at [go.depaul.edu/depaulcentral](http://go.depaul.edu/depaulcentral), and then navigate to Records > FERPA, or visit the federal government website at [ed.gov/policy/gen/guid/fpc/ferpa](http://ed.gov/policy/gen/guid/fpc/ferpa). Any questions concerning FERPA should be directed to DePaul Central at [dpcl@depaul.edu](mailto:dpcl@depaul.edu) or (312) 362-8610.

## HAZING

DePaul prohibits hazing, as defined under applicable laws. Hazing includes but is not limited to, any action taken or situation created to produce mental

or physical discomfort, embarrassment, ridicule or endangerment of a student or group of students for the purpose of initiation into, affiliation with or admission to, or as a condition for continued membership in a group, team, club or other organization. Falsely leading an individual or individuals to believe that they will be inducted/initiated by participating in particular activities may also be considered hazing. Acceptance of the activity on the part of a new member or individual does not excuse sponsorship of the activity.

## ILLEGAL USE OR POSSESSION OF CONTROLLED SUBSTANCES

Students may not illegally use, sell, possess, manufacture or distribute any substance prohibited by local, state or federal law. This includes but is not limited to illegal drugs and controlled substances (including marijuana, narcotics, cocaine, heroin, prescription medications, synthetic cannabinoids or other drugs, and chemicals substantially similar to a controlled substance). Students should be aware that it is unlawful to distribute prescription medication to other students for whom the medication was not prescribed.

Use, possession, manufacture or distribution of drug paraphernalia is also prohibited. Please see the full illegal use policy at [go.depaul.edu/drugpolicy](http://go.depaul.edu/drugpolicy).

## SEXUAL AND RELATIONSHIP VIOLENCE

DePaul University strictly prohibits sexual and relationship violence and threats of sexual and relationship violence, which includes sexual assault,

sexual misconduct, dating violence, domestic violence and stalking.

DePaul University is concerned about the safety and well-being of its faculty, staff and students, and about incidents of sexual misconduct, harassment or violence, whether on- or off-campus. If you experience any type of sexual or relationship violence, please know that you have rights, you have options and support is available for you. Read DePaul's entire institutional policy regarding Sexual and Relationship Violence Prevention and Response at **[go.depaul.edu/srvresponse](http://go.depaul.edu/srvresponse)**.

Any individual who is experiencing any type of sexual and/or relationship violence is encouraged to consult this policy. This document is intended as an overview of various policies, procedures, resources, and supports. Survivors are encouraged to speak directly with DePaul's Title IX Coordinator or Survivor Support Advocates in DePaul's Office of Health Promotion and Wellness, or other resources, for more information.

Consent, or lack thereof, is critical to the definition of sexual assault. At DePaul:

- Consent is the unambiguous and voluntary agreement to move forward with a specific sexual request, act or experience.
- Consent cannot be obtained from individuals who are asleep or who have a temporary or permanent mental or physical incapacity, including as a result of drug or alcohol use, or because of age.
- Consent is an affirmative act, not a lack of action.
- Lack of resistance or submission as the result of force, coercion, duress, or threat thereof does not constitute consent.
- The absence of "no" or "stop" should never be interpreted as implicit consent, if consent is otherwise unclear.
- Resistance is not required to demonstrate lack of consent.

## STUDENT HANDBOOK

The handbook provides university policies that support both academic and behavioral expectations.

The university reserves the right to change programs, courses and requirements; and to modify, amend or revoke any rules, regulations, policies, procedures or financial schedules at any time during a student's enrollment period.

In addition to the policies and information included in this handbook, the student's college or school may have specific guidelines, policies and procedures for which the student is responsible. Students should consult their college section.

The handbook also includes sections on general information and university resources.

You can find the handbook at **[go.depaul.edu/handbooks](http://go.depaul.edu/handbooks)**.





*The departments of the Division of Student Affairs offer a variety of programs and services that are organized around three core functions: student engagement, student support and student academic success. Our offerings reach all students, but many programs target specific populations such as adult students, veterans, students with disabilities, and first-generation college students. The division's mission is to deliver programs and services that foster student success, build community and contribute to the development of the whole student.*

## ADULT, VETERAN AND COMMUTER STUDENT AFFAIRS

### Loop Campus

**1 E. Jackson Blvd.**

**DePaul Center, Suite 11017**

**(312) 362-6216**

### Lincoln Park Campus

**Lincoln Park Student Center**

**2250 N. Sheffield Ave., Room 360**

**[go.depaul.edu/avcsa](http://go.depaul.edu/avcsa)**

Adult, Veteran and Commuter Student Affairs assists these student populations in their transition to college and supports them in achieving their educational goals. By collaborating with key university and external partners, the office provides services, resources and programs that address the specific needs of adult, veteran and commuter students.

## ATHLETIC ACADEMIC ADVISING

### Lincoln Park Campus

**2323 N. Sheffield Ave.**

**Athletic Center, Suite 410**

**(773) 325-7550**

**[go.depaul.edu/aaa](http://go.depaul.edu/aaa)**

Athletic Academic Advising helps student athletes maximize their academic potential by mastering the dual pressures of participating in a sport and earning a college degree. The staff provides time management training, tutoring, registration assistance and other academic support services. The department also coordinates the National Collegiate Athletic Association's (NCAA) life-skills program for student athletes.

## CENTER FOR STUDENTS WITH DISABILITIES

**Lincoln Park Campus**  
2250 N. Sheffield Ave.  
Student Center, Suite 370  
(773) 325-1677

**Loop Campus**  
25 E. Jackson Blvd.  
Lewis Center, Suite 1420  
(312) 362-8002

**csd@depaul.edu**  
**go.depaul.edu/csd**

The Center for Students with Disabilities (CSD) is DePaul University's designate to coordinate accommodations and other services to students in accordance with the Americans with Disabilities Act and Section 504 of the Rehabilitation Act of 1973. As such, CSD regularly works with students with documented diagnoses of a range of disabilities such as learning disabilities, AD/HD, medical conditions chronic illness, mental health disorders, and physical/visual disabilities, among others.

Appropriate documentation is required for a student to receive accommodations. All information is confidential; for students who choose to disclose their disability, course professors will be notified of those names and accommodations at the beginning of each term. If a student self-discloses a disability to a faculty member directly or otherwise asks about accommodations, the student should be directed to CSD. CSD staff members are also available as a resource for faculty and staff who may have questions about accommodating, or otherwise working

with, students with disabilities. For more information, please contact the Center for Students with Disabilities.

## DEAN OF STUDENTS

**Lincoln Park Campus**  
2250 N. Sheffield Ave.  
Student Center, Suite 307  
(773) 325-7290

**go.depaul.edu/dos**

The Dean of Students Office (DOS) is primarily responsible for administering and adjudicating violations of the Code of Student Responsibility at DePaul University. Additionally, the office provides the administrative withdrawal and absence notification process, and can help students identify campus and community resources in times of personal and/or family crises and medical emergencies.

When staff in the Dean of Students Office interact with students, they encourage the student to engage in self-reflection and think critically about their situation in order to foster personal growth. Each student and case is unique, and DOS staff members work to meet each of them where they are in order to support and encourage their academic progress and success.

## DePaul Student Health Service

The Dean of Students Office manages the university's relationship with the DePaul Student Health Service, which is offered through SAGE Medical Group at 1150 W. Fullerton Ave. in Lincoln Park.

The program offers basic medical care for minor illnesses and injuries for a quarterly fee. It is NOT a health insurance plan. If a student lives in a residence hall, except for University Center, they are automatically enrolled in DePaul Student Health Service.

Commuter students can access DePaul Student Health Service by paying the student health service fee to DePaul Central (LPC - Schmitt Academic Center, 101; Loop - DePaul Center 9100). For more information regarding Student Health Service, contact the Dean of Students Office at (773) 325-7290.



## HEALTH PROMOTION AND WELLNESS

**Lincoln Park Campus**  
**2250 N. Sheffield Ave.**  
**Student Center, Suite 302**  
**(773) 325-7129**

**[go.depaul.edu/hpw](http://go.depaul.edu/hpw)**

Health Promotion and Wellness (HPW) provides holistic education, support and resources for individuals to create and sustain long-term, healthy behaviors. We empower the DePaul community to embrace a healthy lifestyle and create a culture of health and well-being that fosters personal and academic success. The office covers issues that affect all aspects of wellness. Specific services include:

- Alcohol and substance abuse prevention
- Sexual and relationship violence prevention
- Health services liaison
- Stress management and mental health support
- Peer health education program (Health Education Action Team)

### Sexual and Relationship Violence Prevention

The sexual and relationship violence prevention specialist serves students in two distinct yet closely linked areas: preventing and addressing sexual violence and promoting healthy relationships and respectful sexual behavior. The specialist serves as an advocate and support for students affected by sexual assault, relationship violence, sexual harassment and stalking, working closely with internal and external resources. In addition, programs are held on campus in collaboration with campus partners to

continue the discussion and education about these topics. The specialist also provides resources, education and training programs that promote healthy relationships and empower students to make respectful choices related to sex.

### Survivor Support Advocates

Survivor Support Advocates in the Office of Health Promotion and Wellness (HPW), including the sexual and relationship violence prevention specialist, can provide students, faculty and staff with a safe, confidential and non-judgmental space to receive emotional support and explore options. Staff can connect university community members with services such as:

- On- and off-campus resources
- Confidential counseling
- Emergency housing and housing accommodations

Specific supports available for students include:

- Legal/law enforcement options (including orders of protection and no contact orders)
- Medical assistance (including information on the importance of preserving evidence)
- University student conduct processes
- Employment accommodations (for on-campus positions only)
- Safety planning (including FERPA blocks)
- Accommodations related to academic, living, transportation, and working situations if requested and reasonably available. Such options are available regardless of whether the survivor reports to local law enforcement or otherwise pursues internal disciplinary options.

Survivor Support Advocates, including the sexual and relationship violence prevention specialist, are generally available Monday through Friday, 9 a.m.-5 p.m. Health Promotion and Wellness accepts walk-ins. Call (773) 325-7129 or email [hpw@depaul.edu](mailto:hpw@depaul.edu) to schedule a meeting.

Learn about other services, including 24-hour resources and other on-campus confidential reporting resources such as University Counseling Services, University Ministry and Croak Student Legal Services, by navigating to the Student Affairs webpage, then **SUPPORT SERVICES > HEALTH AND WELLNESS > SEXUAL HEALTH AND VIOLENCE PREVENTION**.

### **Alcohol and Substance Abuse Prevention**

The alcohol and substance abuse prevention specialist works with students who experience concerns or problems associated with alcohol or substance use. The specialist provides a safe space so students can speak honestly about their situation with the goal of assisting them to make socially responsible choices that promote health and well-being, in addition to reducing harm to self and others. The alcohol and substance abuse prevention specialist offers short term sessions and group discussions. Students do not need an appointment to receive services.

## **MULTICULTURAL STUDENT SUCCESS**

**Lincoln Park Campus  
2250 N. Sheffield Ave.  
Student Center, Suite 105  
(773) 325-7325**

**[omss@depaul.edu](mailto:omss@depaul.edu)**

**[go.depaul.edu/omss](http://go.depaul.edu/omss)**

The Office of Multicultural Student Success (OMSS) works to improve the retention and graduation rates of students of color and first generation students, students who demonstrate financial need, undocumented students and students with marginalized genders and sexualities. The office facilitates opportunities for engagement, advocates for students on campus and is able to provide resources that aid in their successful progress through graduation. These resources include four identity-based student centers (LGBTQA, Black, Asian/Pacific-Islander/Desi-American (APIDA) and Latinx), intersectional identity programming, undocumented student resources, advising/counseling, book loan library, career readiness/graduate school programming, graduate school programming and scholarship information. First-year students can join the Students Together Are Reaching Success (S.T.A.R.S.) Program, and be connected with a peer mentor to ease their transition into college.





## NEW STUDENT AND FAMILY ENGAGEMENT

**Lincoln Park Campus**  
**2250 N. Sheffield Ave.**  
**Student Center, Suite 304**  
**(773) 325-7360**

**[nsfe@depaul.edu](mailto:nsfe@depaul.edu)**

**[go.depaul.edu/nsfe](http://go.depaul.edu/nsfe)**

The Office of New Student and Family Engagement assists students and their families in making a smooth transition into life at DePaul.

The office does this by providing a holistic orientation experience for all new students and families as well as connecting students and families to services, resources and engagement opportunities necessary to successfully navigate the university.

Students and parents are introduced to DePaul values and traditions through orientations. The office also recruits and trains all of the student leaders and staff professionals who partner with faculty members to teach Discover Chicago and Explore Chicago courses, which all incoming first-year students participate in as part of the First-Year Program.

## RESIDENTIAL EDUCATION

**Lincoln Park Campus**  
**2345 N. Sheffield Ave.**  
**Centennial Hall, Room 302**  
**(773) 325-4211**

**[go.depaul.edu/resed](http://go.depaul.edu/resed)**

Residential Education is responsible for responding to student crises, building a sense of community and DePaul spirit, managing the student conduct process and providing students with high-quality opportunities for engagement. Residence directors, a graduate assistant, and resident advisors live on campus and are available to assist students with transition concerns and ongoing advocacy.

## STUDENT INVOLVEMENT

**Lincoln Park Campus**  
**2250 N. Sheffield Ave.**  
**Student Center, Suite 201**  
**(773) 325-7361**

**[involvement@depaul.edu](mailto:involvement@depaul.edu)**

**[go.depaul.edu/involvement](http://go.depaul.edu/involvement)**

The Office of Student Involvement (OSI) fosters student learning and success by providing opportunities for engagement through a wide variety of campus activities and organizations. OSI also provides holistic and intentional advising of student leaders. Finally, OSI develops purposeful and mutually beneficial partnerships across the university and city of Chicago to maximize access and resources to a rich DePaul campus experience. Contact OSI for more information on campus activities and student organizations, including fraternities and sororities.

## UNIVERSITY COUNSELING SERVICES

**Lincoln Park Campus**  
2250 N. Sheffield Ave.  
Student Center, Suite 350  
(773) 325-7779

**Loop Campus**  
25 E. Jackson Blvd.  
Lewis Center, Suite 1465  
(312) 362-6923

**[go.depaul.edu/ucs](http://go.depaul.edu/ucs)**

University Counseling Services provides a range of services intended to help currently enrolled DePaul students remove barriers to academic and personal success by addressing emotional, psychological and interpersonal concerns. University Counseling Services is committed to a student-centered, developmental approach. Daily walk-in hours are available for urgent needs at both campuses. See the counseling services website for more information.

## VICE PRESIDENT FOR STUDENT AFFAIRS

**Loop Campus**  
25 E. Jackson Blvd.  
Lewis Center, Suite 1400  
(312) 362-5680

**Lincoln Park Campus**  
2250 N. Sheffield Ave.  
Student Center, Suite 307  
(773) 325-4852

**[studentaffairs@depaul.edu](mailto:studentaffairs@depaul.edu)**

**[studentaffairs.depaul.edu](http://studentaffairs.depaul.edu)**

The Office of the Vice President for Student Affairs is responsible for and provides support to the 10 departments in the Division of Student Affairs. In addition, students needing help can turn to the vice president's office for student health insurance information, advocacy for student concerns and general questions about the business of being a DePaul student. This office partners with departments across the university to ensure that students receive the individualized assistance they need both in and outside of the classroom.



*Departments outside of the Division of Student Affairs also offer programs and services to DePaul students. These departments manage facilities; provide academic services, such as Financial Aid and Student Records; offer career, fitness and financial programs; foster an alumni spirit; and provide legal guidance.*

## ALUMNI SHARING KNOWLEDGE (ASK )

**Loop Campus**

**1 E. Jackson Blvd.**

**DePaul Center, Suite 9400**

**(312) 362-8281**

**[ask@depaul.edu](mailto:ask@depaul.edu)**

**[ask.depaul.edu](http://ask.depaul.edu)**

The DePaul Alumni Sharing Knowledge (ASK) network connects DePaul students and graduates with alumni to explore college and professional transitions, life challenges and university and career questions.

ASK mentors were once DePaul students, so they know what students are going through. Whether they are exploring majors, career options, searching for a job that aligns with their passion, or dealing with a variety of life challenges, talking to someone who's been there can help.



## CAREER CENTER

**Lincoln Park Campus**  
**2320 N. Kenmore Ave.**  
**Schmitt Academic Center, Suite 192**  
**(773) 325-7431**

**Loop Campus**  
**1 E. Jackson Blvd.**  
**DePaul Center, Suite 9500**  
**(312) 362-8437**

**career\_center@depaul.edu**

**careercenter.depaul.edu**

### Where personal discovery, connections and support lead to rewarding outcomes

By helping students understand and shape their passions, interests and skills, the Career Center connects students with majors, internships, jobs and opportunities so that they can take on Chicago—and the world—with vigor, knowledge and preparation. The Career Center is dedicated to:

**Encouraging personal discovery** – so student careers align with their interests and passions.

**Leveraging business, alumni and community connections in the city of Chicago and around the world** – so students can avail of ever-growing opportunities and step readily in the network of success.

**Developing diverse, real-world skills** – so they are fully prepared and empowered.

Supporting students, alumni, faculty and employers at every step.

## CATHOLIC CAMPUS MINISTRY

**Lincoln Park Campus**  
**2250 N. Sheffield Ave.**  
**Student Center, Suite 104**  
**(773) 325-4134**

**go.depaul.edu/ccm**

Catholic Campus Ministry (CCM) provides a range of programs and resources directed toward supporting the spiritual lives of Catholic students and those interested in learning more about the Catholic faith. Housed on the first floor of the Lincoln Park Student Center, CCM is a welcoming home for students from many backgrounds to form friendships and connect with others in a strong and supportive community of peers for whom faith, service, prayer and good conversation are important.

## DEPAUL CENTRAL

**Lincoln Park Campus**  
**2320 N. Kenmore Ave.**  
**Schmitt Academic Center, Suite 101**

**Loop Campus**  
**1 E. Jackson Blvd.**  
**DePaul Center, Suite 9100**  
**(312) 362-8610**

**dpcl@depaul.edu**

**depaulcentral.depaul.edu**

A one-stop integrated student service area to help students manage financial aid, course registration and tuition payment processes at DePaul.

## FINANCIAL AID

See DePaul Central.

## FINANCIAL FITNESS PROGRAM

**Lincoln Park Campus**  
**2320 N. Kenmore Ave.**  
**Schmitt Academic Center, Suite 101**

**Loop Campus**  
**1 E. Jackson Blvd.**  
**DePaul Center, Suite 9100**  
**(312) 362-6482**

**financialfitness@depaul.edu**

**financialfitness.depaul.edu**

DePaul's Financial Fitness Program provides free services, resources and tools to help DePaul students manage costs from freshman year through graduation and beyond. Services include:

- Money management workshops
- Confidential one-on-one financial advising
- Accessible written and online resources and tools

## GLOBAL ENGAGEMENT

**International Student and Scholar Services:**

**Loop Campus**  
**1 E. Jackson Blvd.**  
**DePaul Center, Suite 9300**  
**(312) 362-8376**

**iss.depaul.edu**

International Student and Scholar Services (ISS) is committed to providing high quality services that support international students so they may successfully engage with the DePaul community and achieve their academic goals. ISS supports international students through the following services and opportunities:

- Orientation
- Immigration advising
- Mentorship and adjustment support
- Leadership development opportunities

**English Language Academy**  
**25 E. Jackson, Suite 1700**  
**Chicago, IL 60604 USA**  
**+1 (312) 362-6455**

**ela@depaul.edu**

The English Language Academy (ELA) is a full-time intensive language program that offers English courses and activities that meet the personal and professional goals of our international students. You can learn more about ELA on the International Admission website, including how to apply, courses and other offerings.



### **Study Abroad:**

**Loop: 14 E. Jackson, Suite 411**

**LPC: 2320 N. Kenmore, Suite 460**

**+1 (312) 362-6962**

**[abroad@depaul.edu](mailto:abroad@depaul.edu)**

Providing DePaul students with a diversity of education abroad offerings, ranging in duration, cost, program type, cross-cultural engagement and academic discipline.

## **HOUSING SERVICES**

**Lincoln Park Campus**

**2345 N. Sheffield Ave.**

**Centennial Hall, Suite 301**

**(773) 325-7196**

**[housing@depaul.edu](mailto:housing@depaul.edu)**

**[housing.depaul.edu](http://housing.depaul.edu)**

Housing Services administers the processes for living on campus and partners with others in promoting this experience. The office strives to provide exceptional services within DePaul's high-quality, residential facilities while also encouraging residents' personal growth and community responsibility.

## **PASTORAL CARE AND RELIGIOUS DIVERSITY**

**Lincoln Park Campus**  
2250 N. Sheffield Ave.  
Student Center, Suite 311  
(773) 325-7902

**Loop Campus**  
1 E. Jackson Blvd.  
DePaul Center, Suite 11008-11010  
[go.depaul.edu/ord](http://go.depaul.edu/ord)

Religious Diversity provides pastoral leadership, support and advocacy to the diverse religious and spiritual communities and persons of DePaul by cultivating a faith- and interfaith-friendly culture, providing pastoral and organizational support to all our student religious organizations, and sustaining interfaith leadership, programming and cooperation on the Lincoln Park and Loop campuses as well as through online resources.

## **RAY MEYER FITNESS AND RECREATION CENTER**

2235 N. Sheffield Ave.  
(773) 325-4555  
[campusrec.depaul.edu](http://campusrec.depaul.edu)

The Ray Meyer Fitness and Recreation Center provides 120,000 square feet of fitness and recreation participation opportunities. Included are a variety of facility spaces, equipment, services and programs (including group fitness, intramural sports, club sports, fitness services, outdoor adventure trips, team challenge activities, instructional classes and special events) to meet the needs of the DePaul community.

## **STUDENT ACCOUNTS**

See DePaul Central.

## **STUDENT CENTERS**

**Lincoln Park Campus**  
2250 N. Sheffield Ave.  
Student Center, Suite 303  
(773) 325-7346

**Loop Campus**  
1 E. Jackson Blvd.  
DePaul Center, Suite 8003  
(312) 362-8624

[studentcenter.depaul.edu](http://studentcenter.depaul.edu)

The Student Centers at DePaul are the centers of community activity. The Student Centers are DePaul's gathering places, providing amenities and services to promote out-of-classroom interaction between students, faculty and staff. The Student Centers department also coordinates campus dining services and manages and supports student meal plans.

## **STUDENT RECORDS**

See DePaul Central.

## **VINCENTIAN COMMUNITY SERVICE OFFICE**

**Lincoln Park Campus**  
2250 N. Sheffield Ave.  
Student Center, Suite 311  
(773) 325-7902

[go.depaul.edu/vcso](http://go.depaul.edu/vcso)

The Vincentian Community Service Office provides students with service opportunities to communities in need, while encouraging students to develop their faith lives in light of their service involvement. Inspired by the example of St. Vincent de Paul, students are engaged in direct service, advocacy and consciousness raising, while working towards building a more just society. Through reflection, students find a safe place to examine questions of social justice.



## **WINTRUST BANK**

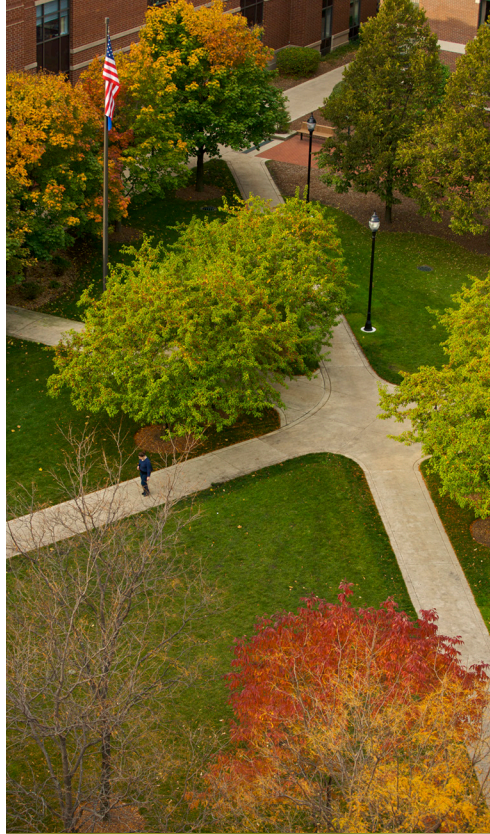
**Lincoln Park Campus**  
**2250 N. Sheffield Ave.**  
**Student Center, Suite 109**

**Loop Campus**  
**1 E. Jackson Blvd.**  
**DePaul Center, Floor 1**

**[wintrust.com/depaul](http://wintrust.com/depaul)**

Wintrust operates fifteen community bank subsidiaries with over 150 banking locations located in the greater Chicago and southern Wisconsin market areas. Wintrust has a deep commitment to the communities it serves throughout Chicago, and their banks are involved with many local chambers of commerce, and are active in local charities, local government, school boards and community development activities.

Wintrust offers six on-campus ATMs and branches at the Lincoln Park and Loop campuses, and offers a special college student bank account option.



## **WOMEN'S CENTER**

**Lincoln Park Campus**

**2320 N. Kenmore Ave.**

**Schmitt Academic Center 150**

**(773) 325-7558**

**[dpuwomenscenter@gmail.com](mailto:dpuwomenscenter@gmail.com)**

**[go.depaul.edu/womenscenter](http://go.depaul.edu/womenscenter)**

The Women's Center is proactive in working towards an open and diverse environment that recognizes that gender, race, class, nationality, ethnicity and sexual orientation, among other factors, shape issues that must be addressed before an open and diverse environment can exist. In this and other ways, the Women's Center acts as a catalyst for positive social change encouraging members of our communities to express their needs and concerns, discuss their interest and develop important networks.





## **PUBLIC SAFETY OFFICE**

**Lincoln Park Campus**  
**2345 N. Sheffield Ave.**  
**Centennial Hall, Suite 304**  
**(773) 325-7777**

**Loop Campus**  
**25 E. Jackson Blvd.**  
**Lewis Center, Lower Level 103**  
**(312) 362-8400**

**[publicsafety.depaul.edu](http://publicsafety.depaul.edu)**

The university commits itself to campus safety and offers many educational programs and crime prevention services through its 24-hour Public Safety Office. Emergency call boxes and security alarms are found throughout DePaul's campuses, and an evening on-campus escort service from 6 p.m.-6 a.m. provides additional safety.

DePaul Public Safety also publishes helpful safety brochures, registers bikes and offers crime prevention workshops throughout the year. The Public Safety Office employs its own certified officers in addition to off-duty Chicago police officers. All major crimes occurring on DePaul's campuses are reported to both DePaul Public Safety and the Chicago Police Department.

## **PARKING SERVICES**

**Lincoln Park Campus**  
**2320 N. Kenmore Ave.**  
**Schmitt Academic Center, Suite 177**  
**(773) 325-7275**

**[parkingservices@depaul.edu](mailto:parkingservices@depaul.edu)**

**[parkingservices.depaul.edu](http://parkingservices.depaul.edu)**

There are faculty/staff and student parking lots on the Lincoln Park Campus. Parking on the Lincoln Park Campus is by permit only.

### **Faculty/Staff Lots**

Lot E, Belden/Seminary  
Lot H, Student Center  
Lot K, 800 W. Belden

### **Student Lots**

Lot P, 990 W. Fullerton  
Lot L, Sheffield/Montana

Since DePaul does not manage any downtown parking facilities, students, faculty and staff at the Loop Campus must park in public garages. However, garages located near the Loop Campus frequently offer special rates for DePaul students, faculty and staff with validation. For more information about faculty/staff parking, permit prices and an application, please visit the Parking Services website at **[parkingservices.depaul.edu](http://parkingservices.depaul.edu)**.

## **PUBLIC TRANSPORTATION**

The Chicago Transit Authority (CTA) provides faculty, staff and students with public transportation via the elevated trains (the 'L'), buses and subway systems. Visit **[transitchicago.com](http://transitchicago.com)** for more information.

The Metra is a regional train system that serves the suburbs. There are two Metra stations downtown, located within walking distance of the Loop campus. Visit **[metrarail.com](http://metrarail.com)** for more information.







DEPAUL UNIVERSITY  
DIVISION OF STUDENT AFFAIRS

1 E. Jackson Blvd.  
Chicago, IL 60604

**[offices.depaul.edu/student-affairs](https://offices.depaul.edu/student-affairs)**